



## CHOOSING THE CORRECT LABEL TEMPLATES

### CL5200/CL5500/CL7200

This document is a guide for understanding and selecting the correct label format/templates for your label printing scale. Please read the options carefully and advise your dealer which option will best suit your company when ordering your scale. All templates shown here are label formats that are provided for **free** and are **pre-installed** on all new Labelling Scales purchased after **31st August 2020**. For scales purchased prior to this date, please contact your dealer and the links to label template files will be made available for download. The scale will need to have the latest FIRMWARE and CL-Works Pro software in order to use the custom labels, please confirm with your dealer if unsure. Obsolete models such as CL-5000 and CL-5000Jr can't be upgraded to use CoOL function and CoOL label templates.

**Additional PLU Programming, Scale Setup, Label Template Edit/Re-Design, is available at additional cost. This is available either through your scale dealer or directly through CAS Australia.**

**Brisbane Office:** 9am ~ 3pm **Ph:** (07) 3267 7767 **Email:** sales@cassscale.com.au

#### LABEL SIZES

### CHOOSE FROM 3 MAIN LABEL SIZES

We have 3 main label sizes to choose from. Select the most appropriate size based on the amount and type of information required to be printed. Core size is 38mm and max overall diameter of the rolls are 90mm.

1. **Small:** 58(W) x 40(H)mm  
Small labels often only have room for just the most basic information. If you do not require CoOL (Country of Origin Label), Ingredients or Nutrition Table then small labels may be suitable.
2. **Medium:** 58(W) x 60(H)mm  
Medium labels are ideal for CoOL information. A second label can be printed if further information like Ingredients or Nutrition Table is required for some but not all PLU.
3. **Large:** 58(W) x 110(H)mm  
Large labels have enough room to fit all information on a single label.

#### LABEL TYPE

### PRE-PRINTED LABEL vs BLANK LABELS

- **Pre-printed labels** come with captions such as PACKED ON, USE BY, NET(kg), \$/kg, \$ PRICE already printed on the label. The scale then fills in the information needed. Pre-printed labels reduce the amount of wear on the thermal print head as only the basic information is printed. These labels use factory installed templates **that can't be altered**.
- **Blank Labels** require a custom designed label template, which means additional info can be added to the label. Custom labels are more flexible and can be updated from time to time to fit with changing business needs.

We have designed a few custom labels and installed them on the scales to be used on blank labels. These label templates can be edited to suit the client if you choose.

**IMPORTANT:** Because of Australia's labeling laws which now require CoOL (Country of Origin Label) info, it is best to use a Blank Label with custom template.

## SMALL LABEL OPTIONS

**When to use Small Labels:** Use small labels when you only require the basic information to be printed and you **DO NOT need CoOL** (Country of Origin Label) info. If you choose to use a Logo, open label Format ID72 in CL-Works Pro label editor and remove the CAS logo and place new logo according to the logo requirements below in option 4. You will need to save the label and also send it to the scale. **NOTE:** As standard, all scales unless stated otherwise will leave base with small LS-5860BK Blank Labels and set to Format ID71 (Option 3).

### WE HAVE 4 OPTIONS TO CHOOSE FROM:

- 1. LS-5840R Labels** = Pre-Printed (Colour Red), Factory label.

#### Format ID10.

This label prints PLU Name, Packed Date, Use By Date, EAN 13 Barcode, Net kg or Pieces (PCS), PLU Number, Unit Price (\$/kg), Total Price, Tare Weight and Company Details.

- 2. LS-5840B Labels** = Pre-Printed (Colour Blue), Factory label.

#### Format ID10.

This label option is the same as the Red label above but the pre-printed area is printed Blue instead of Red.

PRE-PRINTED



LS-5840R or LS-5840B  
Format ID10

- 3. LS-5840BK Labels** = Blank, Custom label, Basic Info.

#### Format ID71.

**(THIS IS THE STANDARD SETUP IF NO REQUEST FOR OTHER FORMAT IS MADE)**

This label prints PLU Name, Packed Date, Use By Date, EAN 13 Barcode, Net kg or Pieces (PCS), PLU Number, Item Code/SKU, Unit Price (\$/kg), Total Price, and Company Details

**Note:** If this label is missing the Large \$ sign in total price, please contact the dealer or CAS.

- 4. LS-5840BK Labels** = Blank, Custom label, Basic Info, Logo.

#### Format ID72.

This label prints a Small Landscape logo, PLU Name, Packed Date, Use By Date, EAN 13 Barcode, Net kg or Pieces (PCS), PLU Number, Item Code/SKU, Unit Price (\$/kg), Total Price, and Company Details.

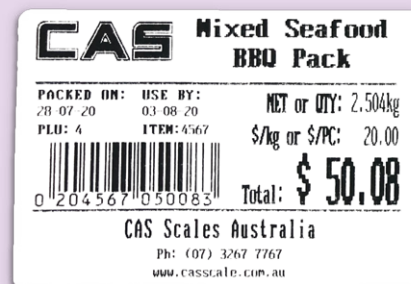
**Logo Requirements:** The logo must be Black & White (No GREY) BMP, PNG or JPEG file. Ruff Size: 150(W) x 50(H) pixels. Resolution: 150 dpi.

**Note:** If this label is missing the Large \$ sign in total price, please contact the dealer or CAS.

CUSTOM



LS-5840BK  
Format ID71



LS-5840BK  
Format ID72

## REQUIRED SETTINGS

If you have requested any of the above options during time of purchase, then the scale should already be set up. If not you can check the settings below.

**User Menu Settings:** In menu 1510 "Label Format" - "Use Global Label" should be set to 1 = Yes. Then in "PLU Label No." enter 71 or 72 and scroll down to next option "MISC Label No." and enter 71 or 72. Then press SAVE key.

## MEDIUM LABEL OPTIONS

**When to use Medium Labels:** Use medium pre-printed labels when you require additional info such as ingredients. Or medium blank labels when you require **CoOL** (Country of Origin Label) info. When using CoOL option, you will need all 3 label templates ID51~ID53 as a set. If only a handful of PLUs require Ingredients & Nutrition Table, then use ID53 for second label, this will save on printing. (**NOTE:** As standard, all scales unless stated otherwise will leave base with small LS-5860BK Blank Labels and set to Format ID71.)

### WE HAVE 3 OPTIONS TO CHOOSE FROM:

1. **LS-5860R Labels** = Pre-Printed (**Colour Red**), Factory label.  
**Format ID23.**  
 This label prints PLU Name, Packed Date, Use By Date, EAN 13 Barcode, Net kg or Pieces (PCS), PLU Number, Unit Price (\$/kg), Total Price, Tare Weight and Company Details.



2. **LS-5860B Labels** = Pre-Printed (**Colour Blue**), Factory label.  
**Format ID23.**  
 This label option is the same as the Red label above but the pre-printed area is printed Blue instead of Red.

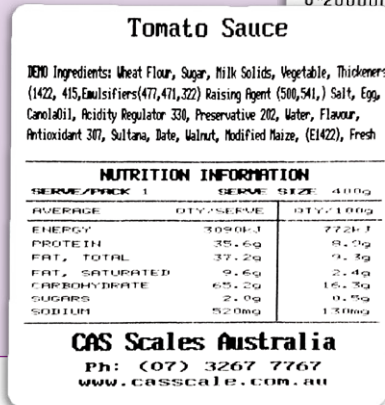
3. **LS-5860BK Labels** = Blank, CoOL label.  
**Format ID51 = PLU Item label.**  
 This label prints CoOL Info, PLU Name, Packed Date, Use By Date, EAN 13 Barcode, Net kg or Pieces (PCS), Unit Price (\$/kg), Total Price, and Company Details.



**LS-5860BK Labels** = Blank, CoOL label.  
**Format ID52 = MISC Item label** (No CoOL field).  
 This label prints only MISC item's Packed Date, EAN 13 Barcode, Net kg or Pieces (PCS), Unit Price (\$/kg), Total Price, and Company Details.



**LS-5860BK Labels** = Blank, CoOL label.  
**Format ID53 = Second Label** for Ingredients & Nutrition Table.  
 This label prints only when a PLU has ID53 entered in "Aux Label No." It prints as a second label and contains PLU Name, Ingredients, Nutrition Table, and Company Details.



**CoOL Settings:** Please see "CL5200/CL5500/CL7200 CoOL Function User Info - Label Printing.pdf" for information on how to set up CoOL information in CL-Works Pro PLU editing software.

**Note:** If these labels are missing the Large \$ sign in total price, please contact the dealer or CAS.

## REQUIRED SETTINGS

If you have requested any of the above options during time of purchase, then the scale should already be set up. If not you can check the settings below.

**User Menu Settings:** In menu 1510 "Label Format" - "Use Global Label" should be set to 1 = Yes. Then in "PLU Label No." enter 51 and scroll down to next option "MISC Label No." and enter 52. Then press SAVE key. For second label (Aux. Label) you must add 53 to the PLU data in column "Aux. Label No.". In menu 1144 "Select PLU Items" you must scroll down to "Aux. Label No.", turn on by pressing number 1 (Yes), then press SAVE key.



## LARGE LABEL OPTIONS

**When to use Large Labels:** Use large blank labels when all or majority of PLUs require additional info such as CoOL info, Ingredients and Nutrition Table. Because this option is designed for CoOL information, you will need both label templates ID61 & ID63 as a set or ID62 & ID63. If you choose to use a Logo, open label Format ID62 in CL-Works Pro label editor and remove the CAS logo and place new logo according to the logo requirements below in option 2. You will need to save the label and also send it to the scale.

**(NOTE: As standard, all scales unless stated otherwise will leave base with small LS-5860BK Blank Labels and set to Format ID71.)**

### WE HAVE 2 OPTIONS TO CHOOSE FROM:

#### 1. LS-58110 Labels = Blank, CoOL label.

##### Format ID61 = PLU Item label.

This label prints CoOL Info, PLU Name, Packed Date, Use By Date, EAN 13 Barcode, Net kg or Pieces (PCS), Unit Price (\$/kg), Total Price, PLU #, Item Code/SKU, Ingredients, Nutrition Table and Company Details.

##### LS-5860B Labels = Blank, CoOL label.

##### Format ID63 = MISC Item label (No CoOL field).

This label prints only MISC item's Packed Date, EAN 13 Barcode, Net kg or Pieces (PCS), Unit Price (\$/kg), Total Price, and Company Details.

**CoOL Settings:** Please see "CL5200/CL5500/CL7200 CoOL Function User Info - Label Printing.pdf" for information on how to set up CoOL information in CL-Works Pro PLU editing software.



CoOL

LS-58110  
Format ID61

#### 2. LS-5860B Labels = Blank, CoOL label.

##### Format ID62 = PLU Item label with LOGO.

This label prints CoOL Info, PLU Name, Packed Date, Use By Date, EAN 13 Barcode, Net kg or Pieces (PCS), Unit Price (\$/kg), Total Price, PLU #, Item Code/SKU, Ingredients, Nutrition Table, Logo and Company Details.

**Logo Requirements:** The logo must be Black & White (No GREY) BMP, PNG or JPEG file. Ruff Size: 150(W) x 50(H) pixels. Resolution: 150 dpi.

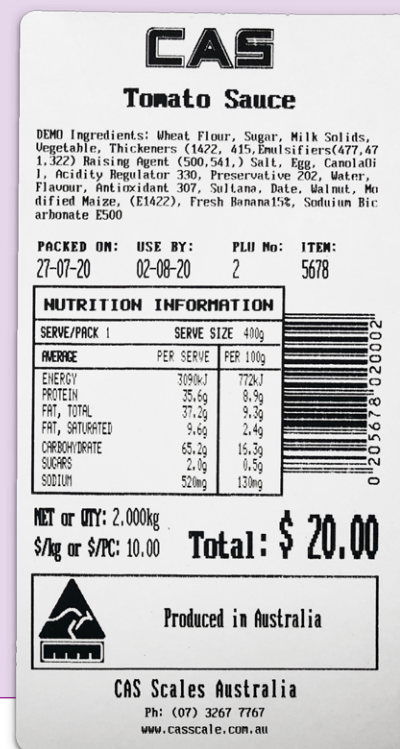
##### LS-5860B Labels = Blank, CoOL label.

##### Format ID63 = MISC Item label (No CoOL field).

This label prints only MISC item's Packed Date, EAN 13 Barcode, Net kg or Pieces (PCS), Unit Price (\$/kg), Total Price, and Company Details.

**CoOL Settings:** Please see "CL5200/CL5500/CL7200 CoOL Function User Info - Label Printing.pdf" for information on how to set up CoOL information in CL-Works Pro PLU editing software.

LS-58110  
Format ID62  
(Logo)



CoOL with LOGO

## REQUIRED SETTINGS

If you have requested any of the above options during time of purchase, then the scale should already be set up. If not you can check the settings below.

**User - User Menu Settings:** In menu 1510 "Label Format" - "Use Global Label" should be set to 1 = Yes. Then in "PLU Label No." enter 61 or 62, then scroll down to next option "MISC Label No." and enter 63. Then press SAVE key.