

CITIZEN

Micro HumanTech

Get the full width Thermal printing up to 112mm for the Point-Of-Sale



CT-S4000/4000L

Get the full width

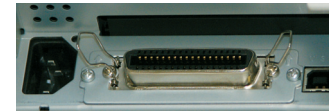
Thermal printing up to 112mm for the Point-Of-Sale

Print width up to 112mm -

The CT-S4000 offers 3 different paper width, 80, 82.5 and 112mm. All on standard thermal paper or labels. USB is default in addition to serial and parallel interface boards. This makes the CT-S4000 a future-proof investment.

Dual Interface -

USB is default in addition to serial or parallel interface boards. This makes the CT-S4000 a future-proof investment.



Internal Power Supply -

POS printers from Citizen offer an internal power supply. The CT-S4000 has a detachable one. Once taken off it is the smallest POS printer in its class.

CT-S4000 / 4000L

POS

Applications

- Receipt
- Coupon
- Ticket
- Daily report
- Kitchen
- Delivery slip
- Barcode
- Weigh scales
- Kiosk



Easy paper loading



Available in black



Vertical solution

CITIZEN

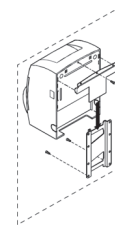
Micro HumanTech

Options

Lable type



Wall Mount kit



Interface cards



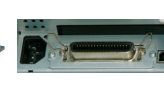
Parallel (TA66811-0)



Serial (TB66832-00F)



Ethernet (950053-00)

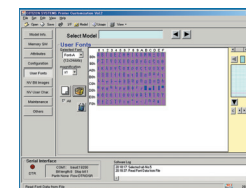
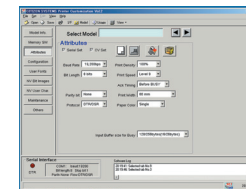
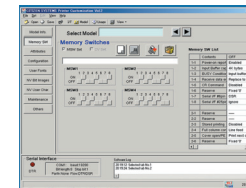
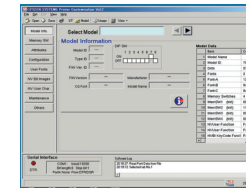


USB

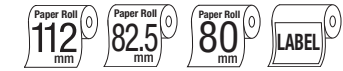
Specifications

Printing method	Line thermal dot printing
Printing width	112mm paper: 104mm/832 dots, 82.5mm paper: 82.5mm/660 dots, 80mm paper: 72mm/ 576 dots
Dot pitch	8 x 8 dots/mm (203 dpi x 203 dpi)
Printing speed	Max. 150mm/sec (35.4 lines/sec)
Number of columns	112mm paper: Font A – 69 columns / Font B – 92 columns / Font C – 104 columns 82.5mm paper: Font A – 55 columns / Font B - 73 columns / Font C – 82 columns 80mm paper: Font A - 48 columns, Font B - 64 columns / Font C - 72 columns
Character size (WxH)	Font A: 1.25 x 3.00mm (12 x 24 dots) Font B: 0.88 x 2.13mm (9 x 17 dots) Font C: 0.88 x 2.00mm (8 x 16 dots)
Character table	Code page 437, 850, 852, 857, 858, 860, 863, 864, 865, 866, Katakana, WPC1252, Thai code 18
Barcode type	UPC-A/E, JAN (EAN)-13/8, ITF, Code 39, Code 128, CODABAR, Code 93, PDF-417 (Label type only)
Line spacing	4.23mm (1/6 inch); can be set by command.
Paper	Roll paper: 112 / 82.5 / 80mm x Ø102mm (max.) Thickness: 0.065 – 0.150mm, Label paper: 112mm x Ø102mm (max.) Thickness: 0.150mm (max), Label width: 108mm (max.), Label length: 25mm/pc (min.)
Interface	Parallel (IEEE 1284) & USB, Serial (RS-232C) & USB
Input buffer	4K bytes / 45 bytes
NV user memory	384K bytes
Drawer kick-out	2 Drawers
Power supply	Input: AC 100-240V, 50/60 Hz, 150VA Output: DC24V, 2A DC 24V±7% (DC power supply type)
Weight	AC power type; 2.1kg / DCP power type: 1.9kg
Dimensions (W x D x H)	177 x 213 x 147mm
Operating environment	5~40°C, 10~90% RH (No condensation)
Storage environment	-20~60°C, 10~90% RH (No condensation)
Reliability	Main unit: 20,000,000 lines, Thermal head: 100,000,000 pulses or 100km Auto cutter: 1,000,000 cuts
EMC and safety standards	UL, C-UL, FCC Class A, TUV-GS, CE marking, CCC

Customization Software



Features



- 150mm/sec high-speed printing
- 112/82.5/80mm selectable paper width
- Easy paper loading
- Cutter (full/partial)
- Larger paper roll capability as Ø102mm
- Optional interface cards
- USB is default in addition to Serial or Parallel interface board
- Built-in Power Supply
- Black mark function (option)
- Bitmap data registration (NV memory)
- Cash drawer kick-out
- Barcode printing
- ESC/POS compatibility
- Page mode
- Two color printing
- Smoothing font
- Label printing (CT-S4000L)
- Available in white or black
- Driver: Windows2000/XP/Vista/2003 Server, OPOS 1.8, CUPS

Type Classification

CT-S4000 DC RS E BK L
1) 2) 3) 4) 5) 6)

- | | | | | | |
|----------------------------------|--|---|--|--|--|
| 1) Model type
CT-S4000 | 2) Power Supply
None: AC power type
(built-in Power supply)
DC: DC power supply type | 3) Interface
PA: Parallel (IEEE1284) & USB
RS: Serial (RS-232C) & USB
UB: USB only (option) | 4) Character set, AC cable
U: USA
E: Europe | 5) Body case color
WH: Cool white
BK: Black | 6) Label/Black mark
None: Standard (No sensor type)
L: Label sensor type
M: Black mark sensor type |
|----------------------------------|--|---|--|--|--|